



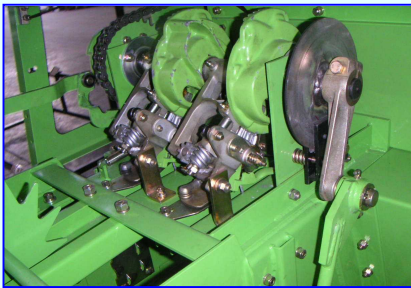
# HAY BALER

Powerful and efficient!!

THB3060



### Reliable STAR original knotter



Reliable STAR original knotter can work without any trouble. You can prevent binding errors with proper adjustment.

### Wide pick-up 181cm



THB3060 has a wide pick-up of 181cm (pick-up part width is 169cm). It ensures effective work for a large windrow, even at the corner of the field.

### Mechanical machine protection

Slip clutch, one-way clutch, and shear bolt are equipped. Moreover, the pick-up, fork, and knotter each have protection parts independently.



### Convenient bale counter



Convenient bale counter is standard equipment. You can see how many bales are packed instantly.

## SPECIFICATIONS (Approximate)

Model	Bale size (cm)		Dimensions (cm)			Weight (kg)	Width of pick up (cm)	Number of pick up tine	Working capacity (Ton/hr)	Working speed (km/hr)	Tractor, Required Hp
	Cross section	Length	Length	Width	Height						
THB3060	36x48	30 ~ 120	500	280	138	1470	181	4x11	8 ~ 13	4 ~ 10	26 ~ 59kW (35 ~ 80PS)

Others ;  
 • Plunger stroke 92 stroke/min      • Overload slip clutch as standard  
 • Universal joint with One way clutch      • Shear bolt protection ( Knotter / Fork / Fly wheel )

Remarks : Working capacity subject to change depending on the type and/or moisture content of material.  
 Bale size and Bale weight varies depending on materials.  
 Figures, technical data, dimensions and weights are subjects to changing without notice.

## IHI STAR Machinery Corporation

1061-2 Kamiosatsu, Chitose-shi, HOKKAIDO 066-8555 JAPAN  
 TEL +81-123-26-2210 FAX +81-123-26-2412

E-mail [star@star-web.jp](mailto:star@star-web.jp)  
 Website <http://www.ihl-star.com/english/>

2008.04